

# 5044 Amen Corner

## \$429,000

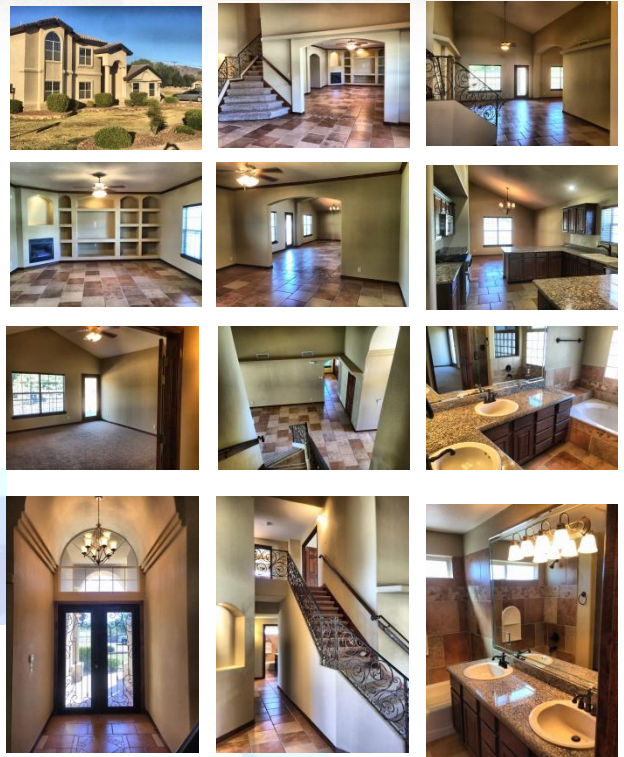
3489 sf



5044 AMEN CORNER

Situated at the entry of the El Paso Country Club this beautifully appointed home features nearly 3500 square feet with 5 very spacious bedrooms and 3 full bathrooms. The lot itself is nearly a half an acre and is located seconds from the

heart of all the shops and stores of the west side. With the transformation of Country Club road this homes location can't be beat. This home is vacant and can be viewed any time!!!



### Directions

1. Take the ramp on the left onto I-10 W
2. Take exit 11 for TX-20/Mesa St
3. Turn left onto N Mesa St
4. Continue onto Country Club Rd
5. Turn left onto Amen Corner Dr

Call Mike  
(915) 494-5154

### Location

